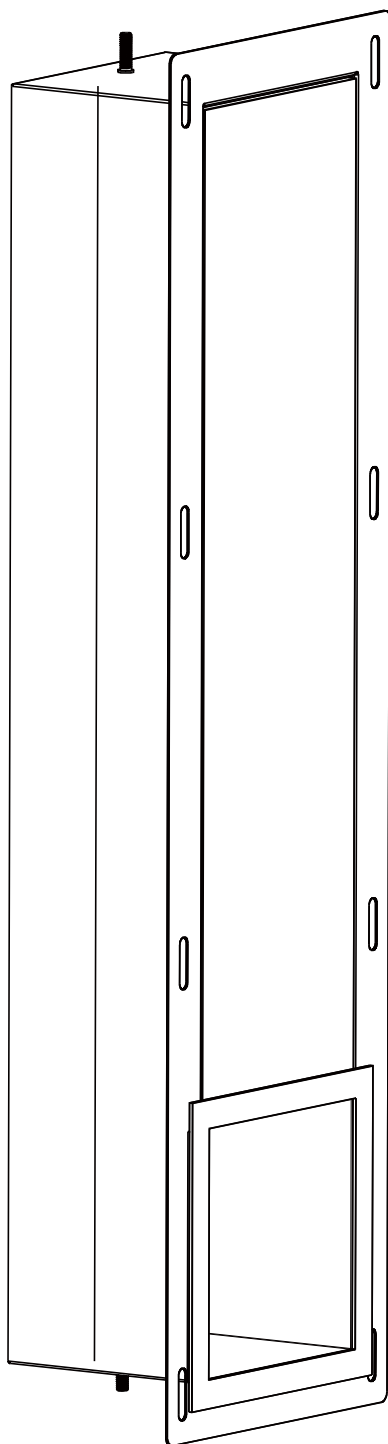


# INSTALLATION MANUAL



*Please read the instuction carefully before using.*

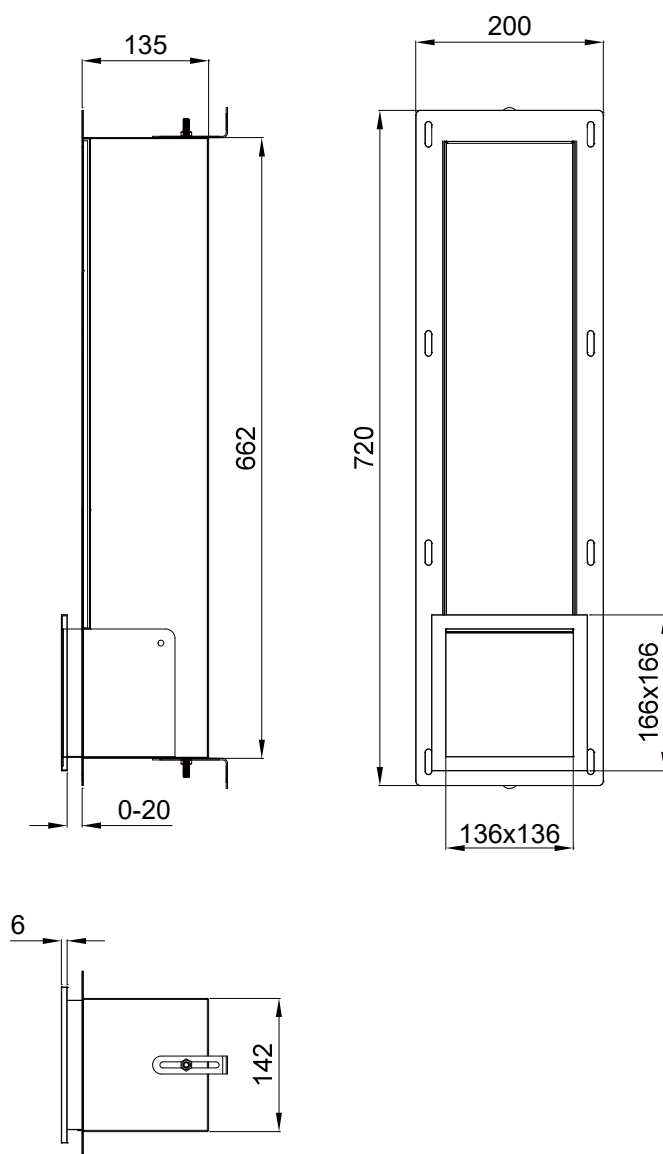
## DESCRIPTION:

### Product features

- ◆ Material : Stainless steel 304
- ◆ Colors: PVD brushed gold, PVD brushed rose gold, PVD brushed gunmetal, Brushed steel, Matt black, Matt white
- ◆ Wall type: Solid wall construction
- ◆ Suitable for wet areas
- ◆ Where to use: renovation, new construction
- ◆ Easy to clean

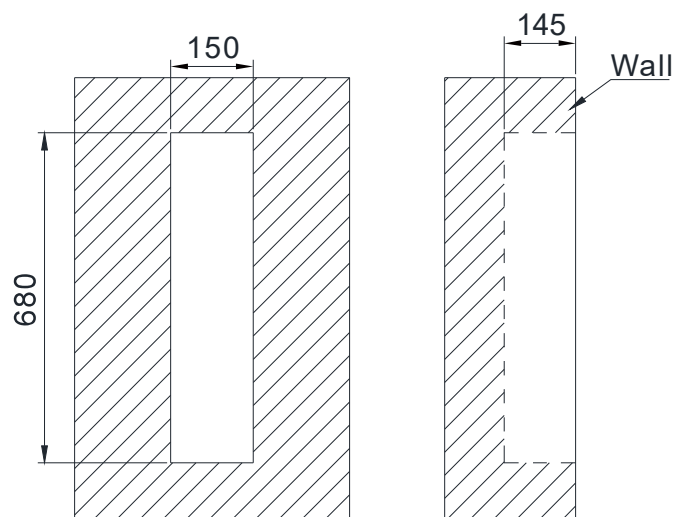
## MAINTAINANCE:

**NO ACID OR ALKLINE DETERGENTS SHOULD BE USED, ONLY CLEAN WATER WITH SOFT CLOTH RECOMMENDED.**



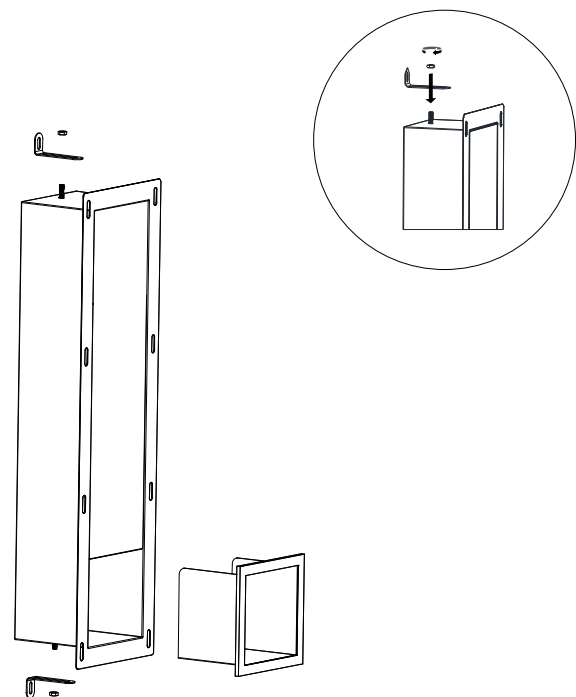
Step1.

Dig a hole in the wall where the niche is to be installed. For dimensions, refer to the technical drawing shown above.Keep an extra 5 mm space for the niche. Length and width. Check your product frequently.



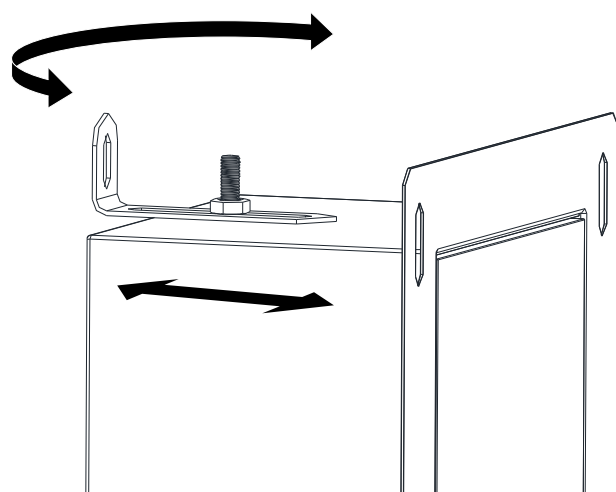
Step2.

Fix the bracket on the niche,



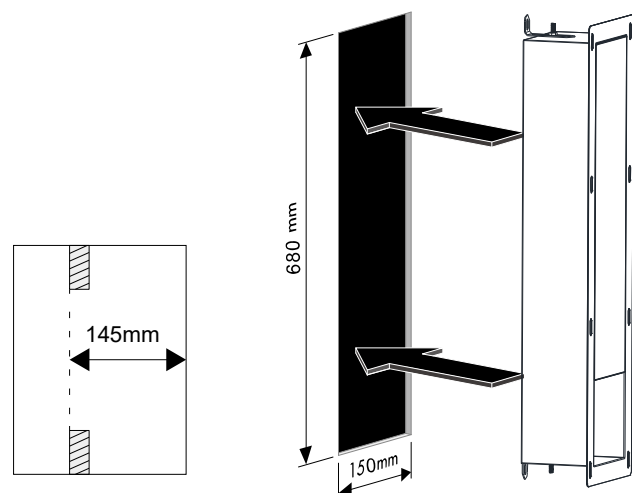
Step3.

Adjust the distance to suit the hole depth,and fasten the screw.



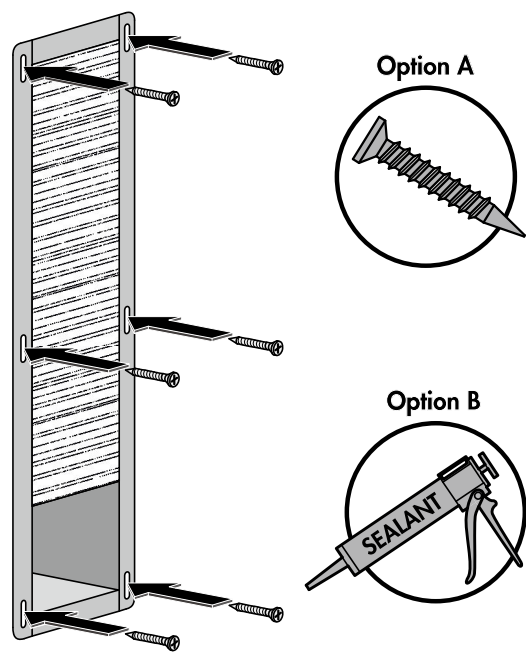
Step4.

Put the niche into the wall.



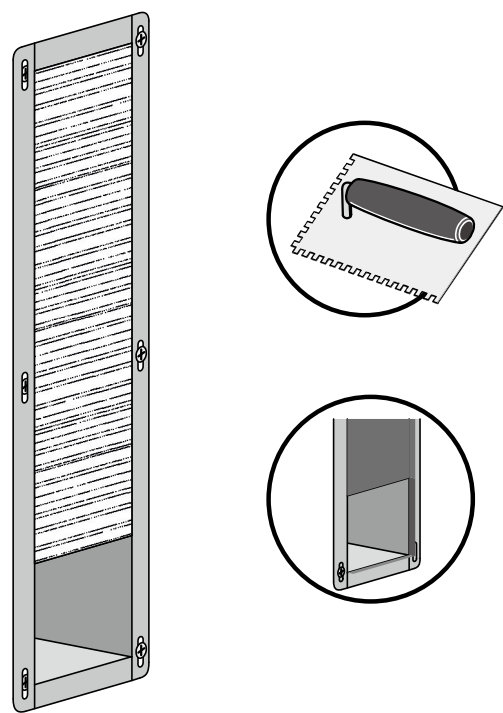
Step5.

Fix the niche with screw or sealant.



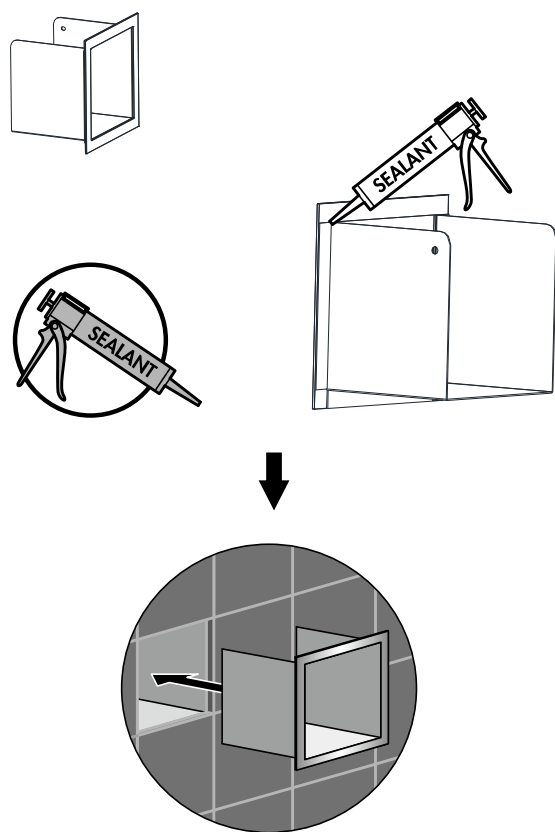
Step6.

Finish tilling



Step7.

Fix the accessories to the niche with sealant



Step8.

Store the towel paper in the niche

